

Poverty Mapping: Client Targeting Approach to Inclusive Growth

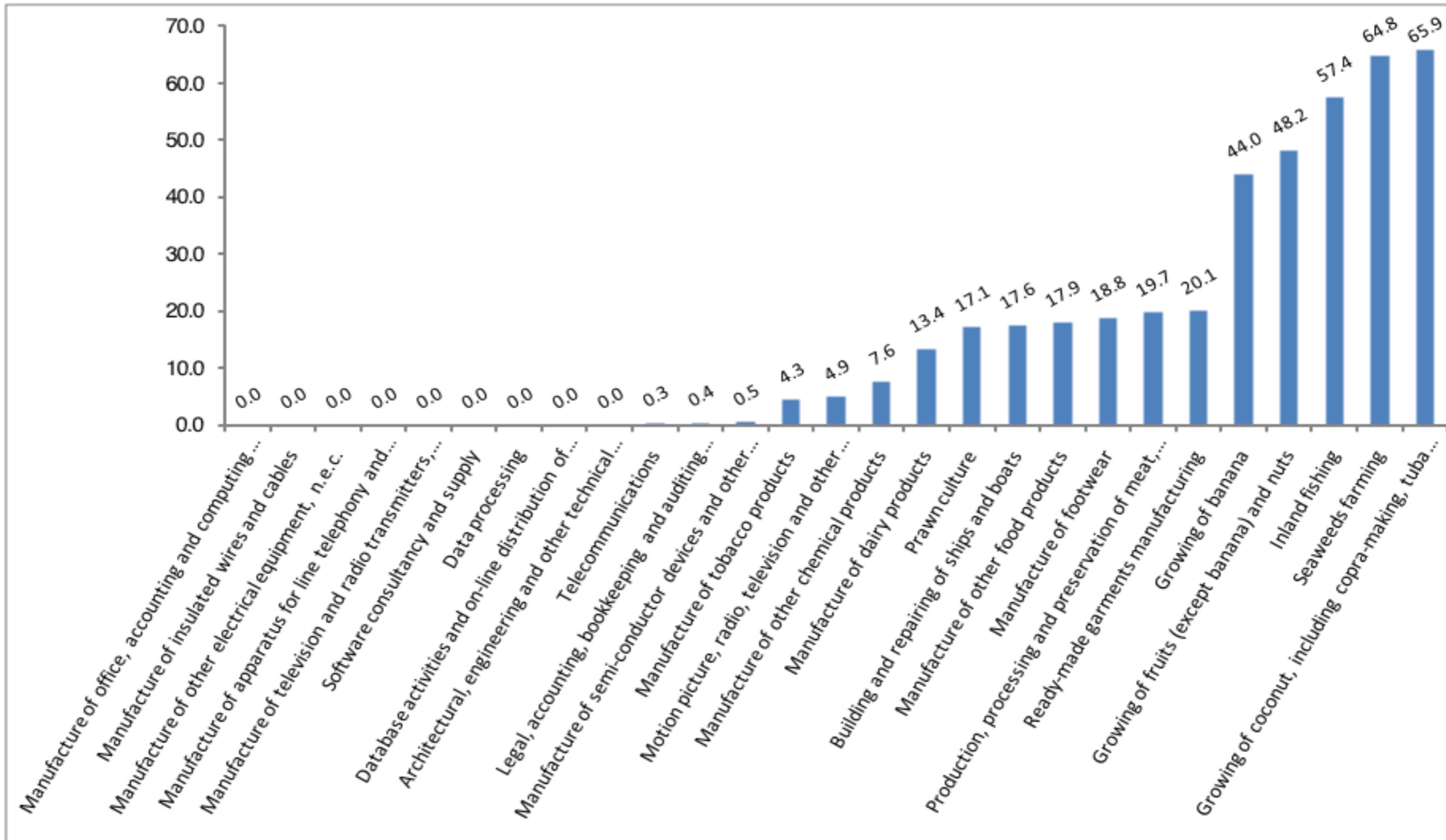
Usec Jude Esguerra, NAPC

Key Messages

- We know who the poor are and the economic sub-sectors where they are(under)employed;
- We know the constraints and risks that the poor face and how even the non-poor may fall into poverty due to these;
- We know that enterprises need to come closer to where the poor are;
- Inclusive growth is a place

From unskilled employment to value adding

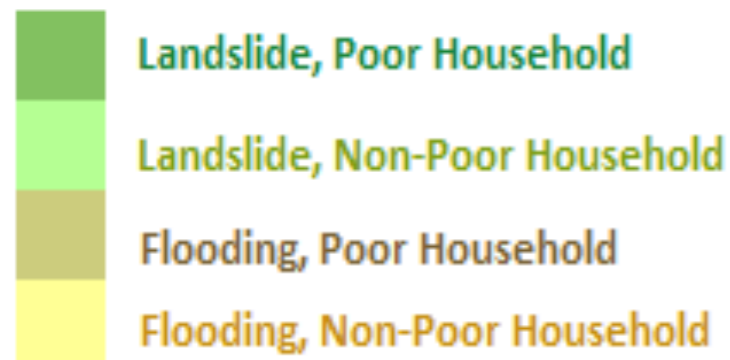
The unskilled are in specific industry sub-sectors



Top 20 Provinces with Highest Number of Poor Households Exposed to High Risk of Flooding and/or Landslide

Legend:

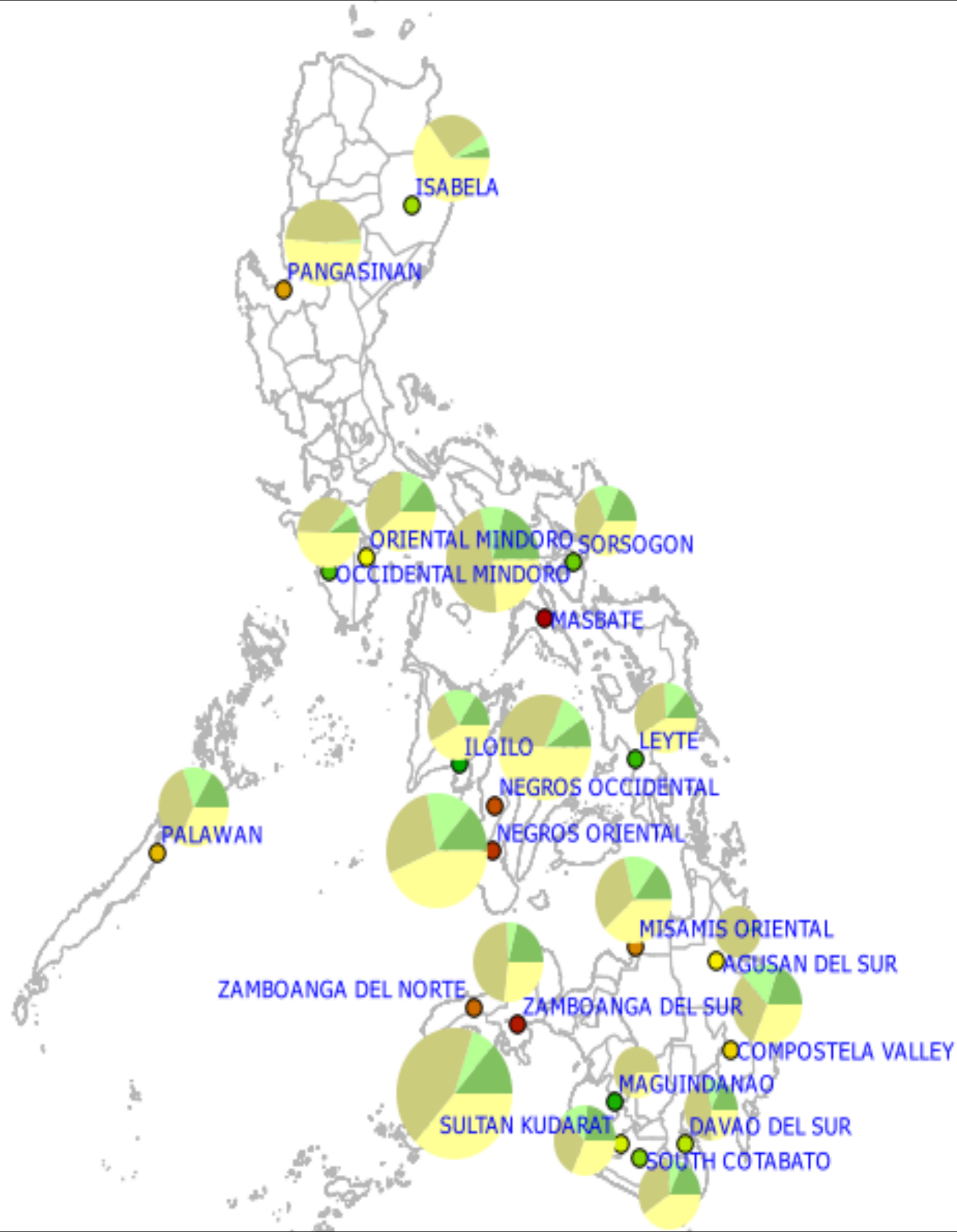
Type of Risks and Households



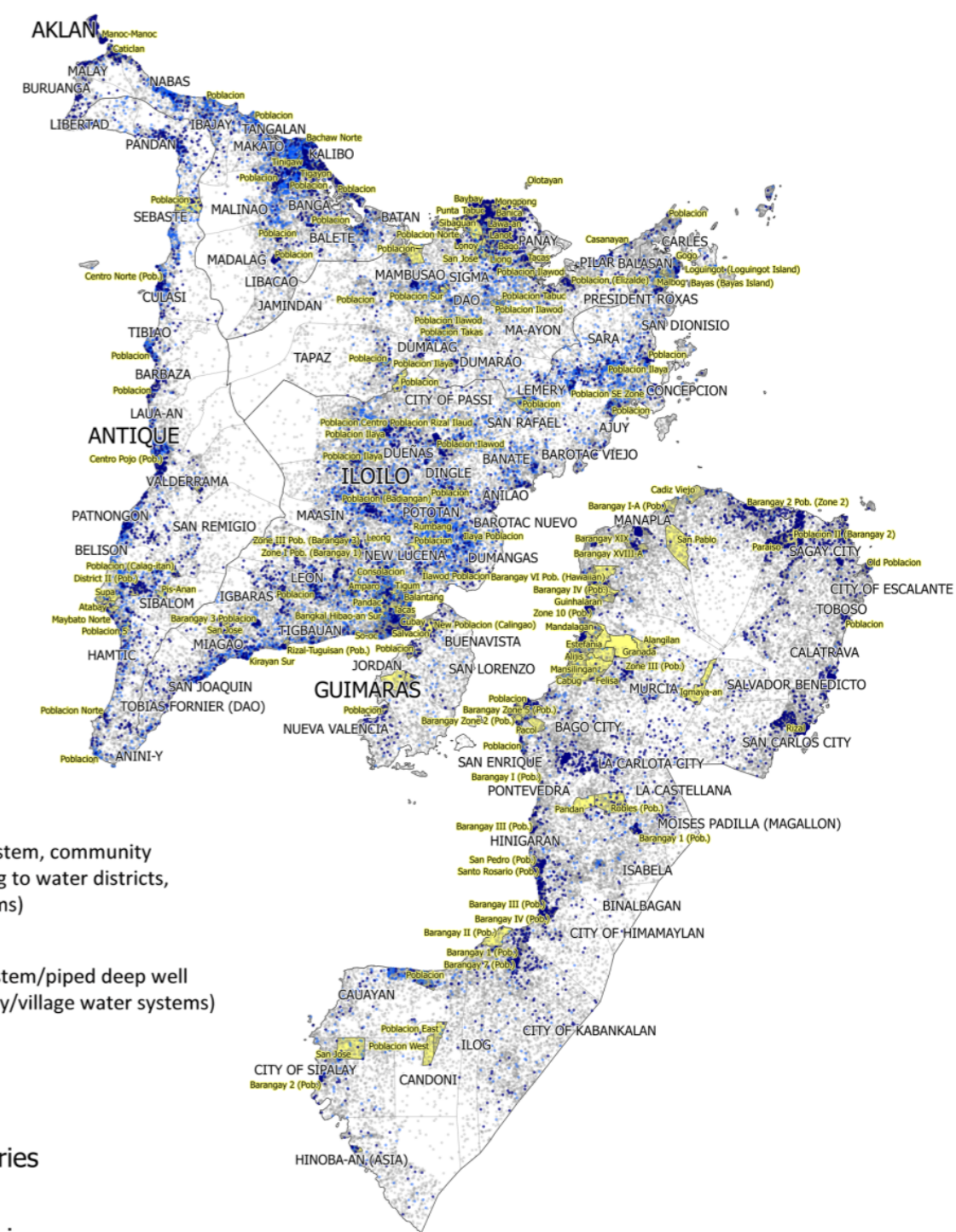
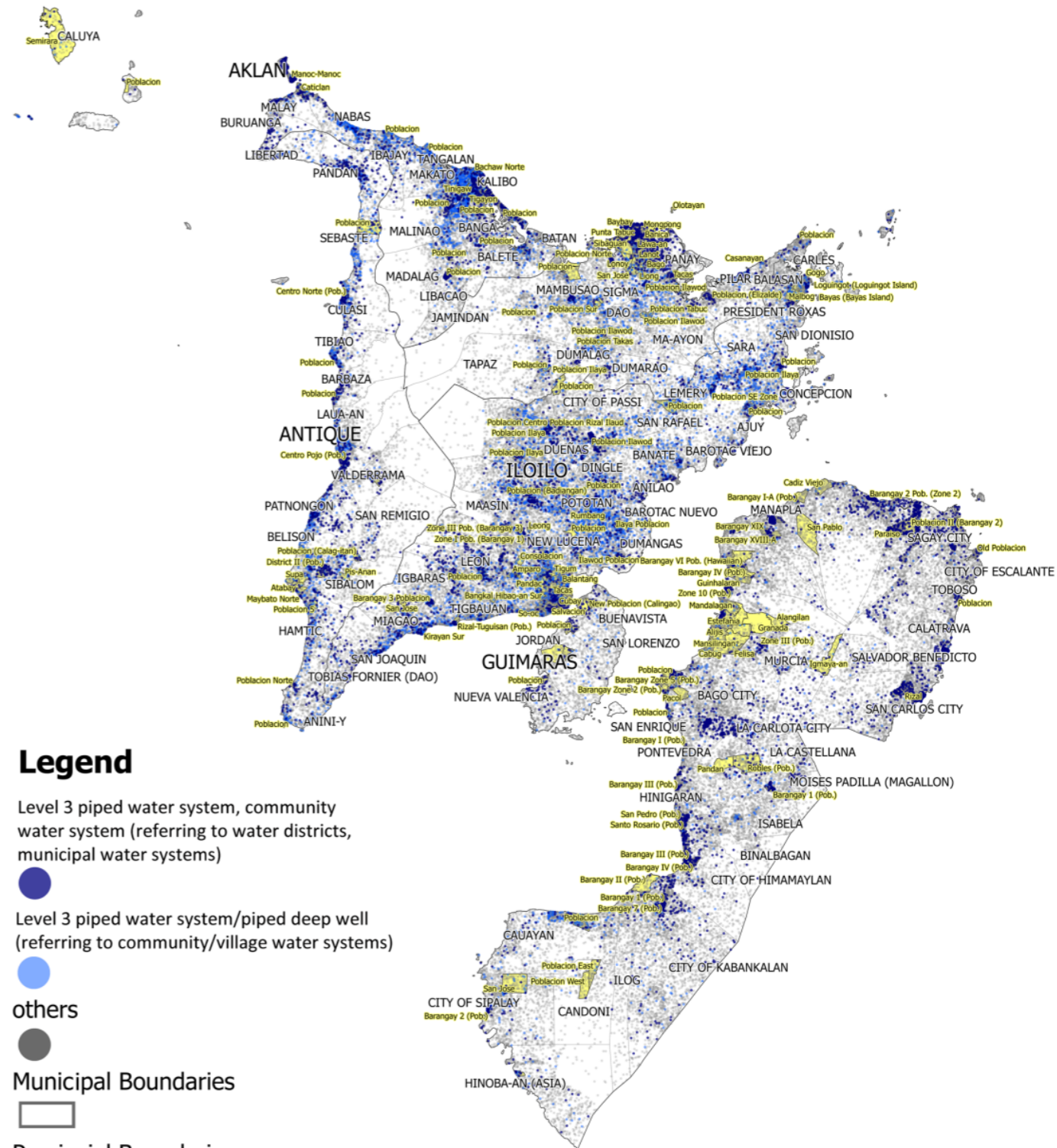
Ranking of Provinces Based on the Number of Poor Households Exposed to Risk/s

- Lowest (ILOILO)
-
- Highest (MASBATE)

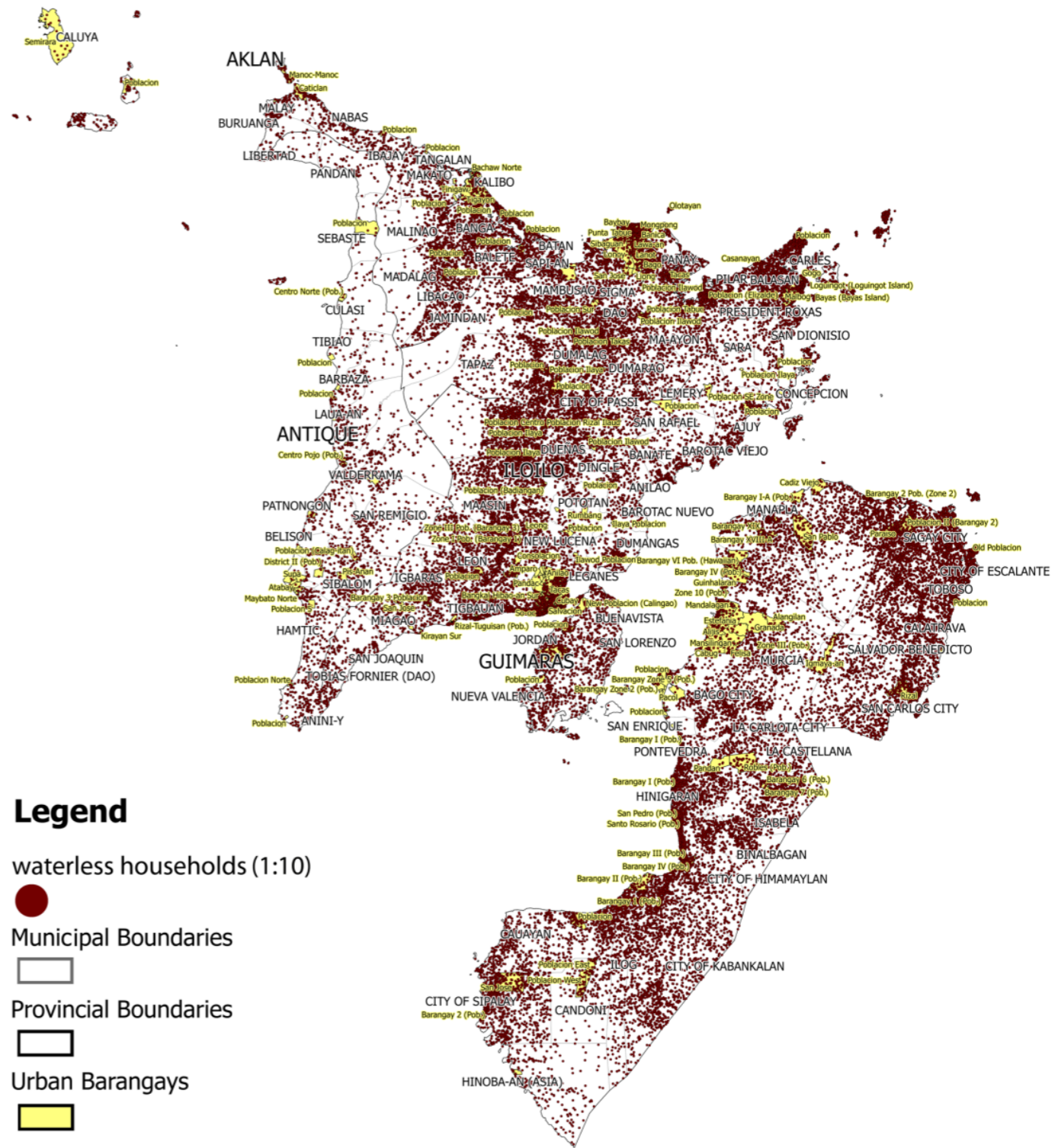
Total Households Exposed to Risk/s are Proportional to Circle Size



Region VI (Access to Piped Water)



Region VI (Waterless Households)



Legend

waterless households (1:10)



Municipal Boundaries



Provincial Boundaries



Urban Barangays



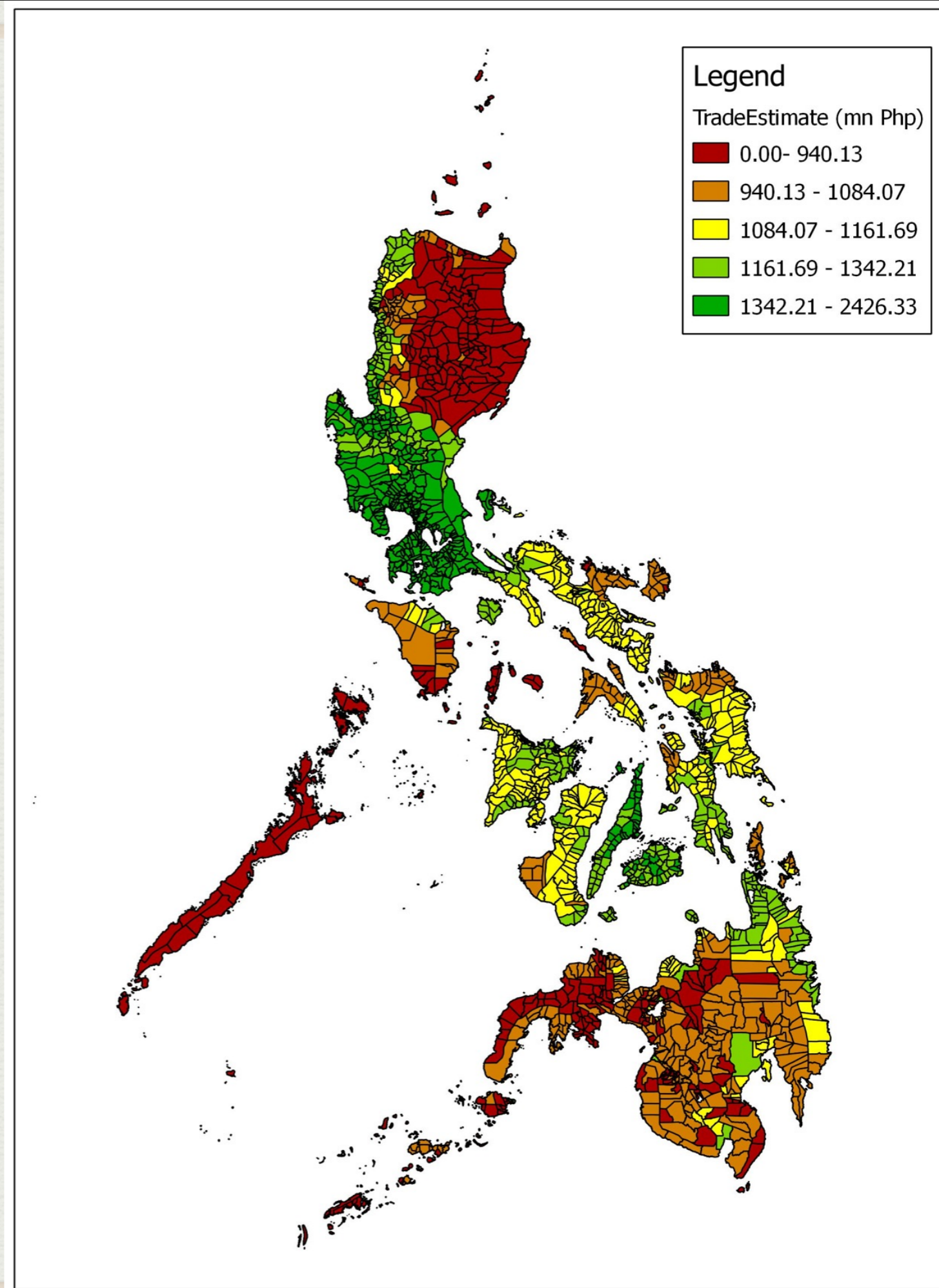
Inclusive Growth is a Place



- “What programs do we have for Siayan – the poorest municipality in the country?”

Pres. Aquino

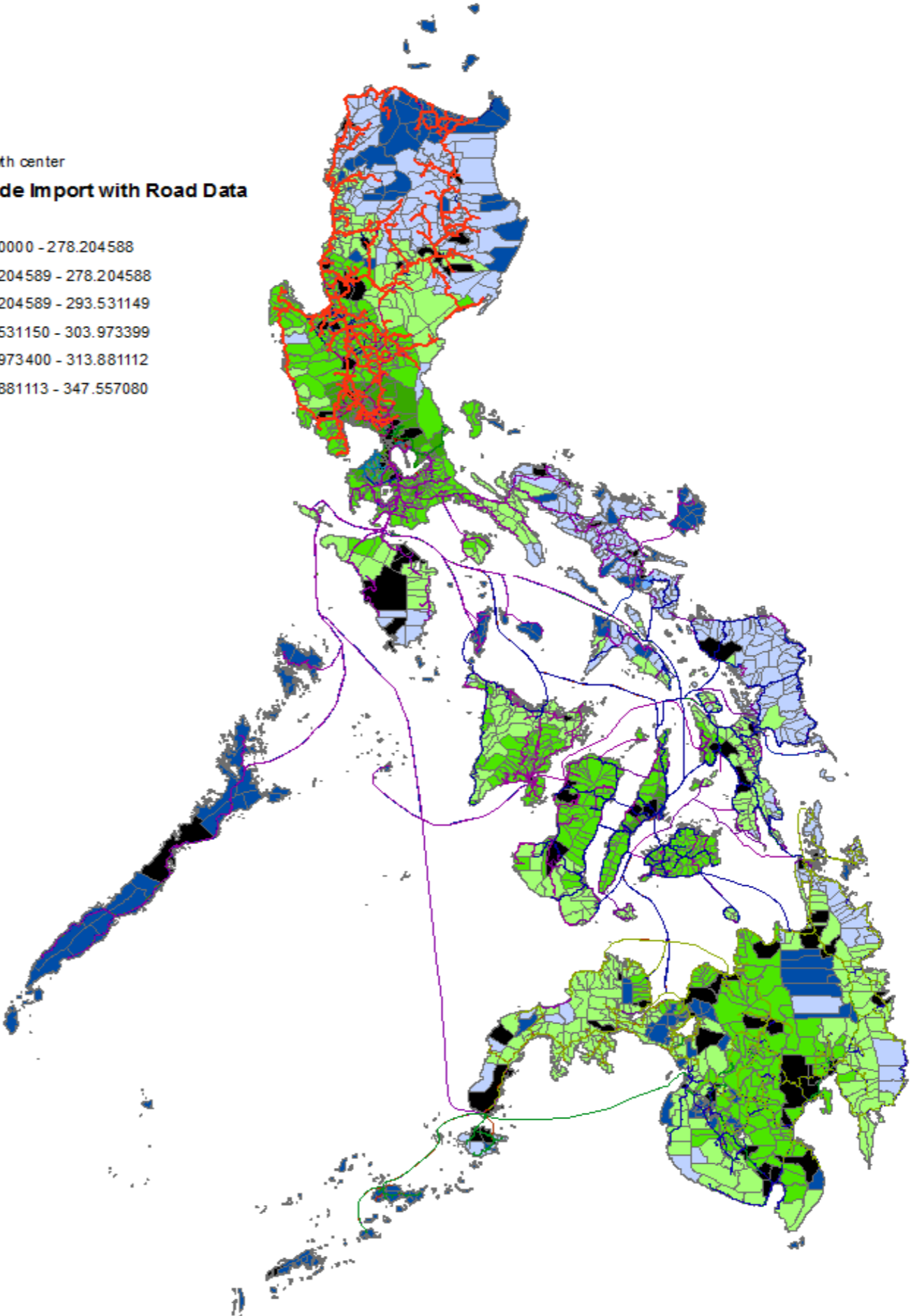
From maps of Poverty to Maps of Opportunity



Trade Volume with Road Network

Legend

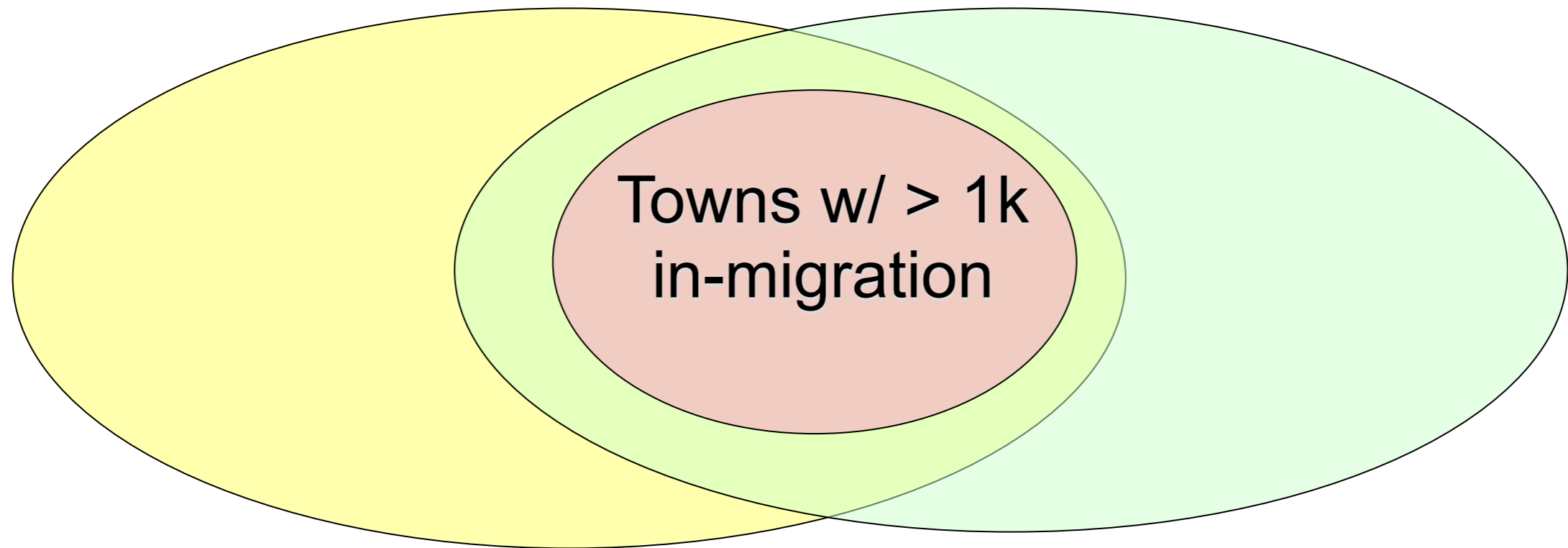
- growth center
- Total Trade Import with Road Data (PHP Mn)**
 - 0.000000 - 278.204588
 - 278.204589 - 278.204588
 - 278.204589 - 293.531149
 - 293.531150 - 303.973399
 - 303.973400 - 313.881112
 - 313.881113 - 347.557080



3. High Trade High Poor Towns

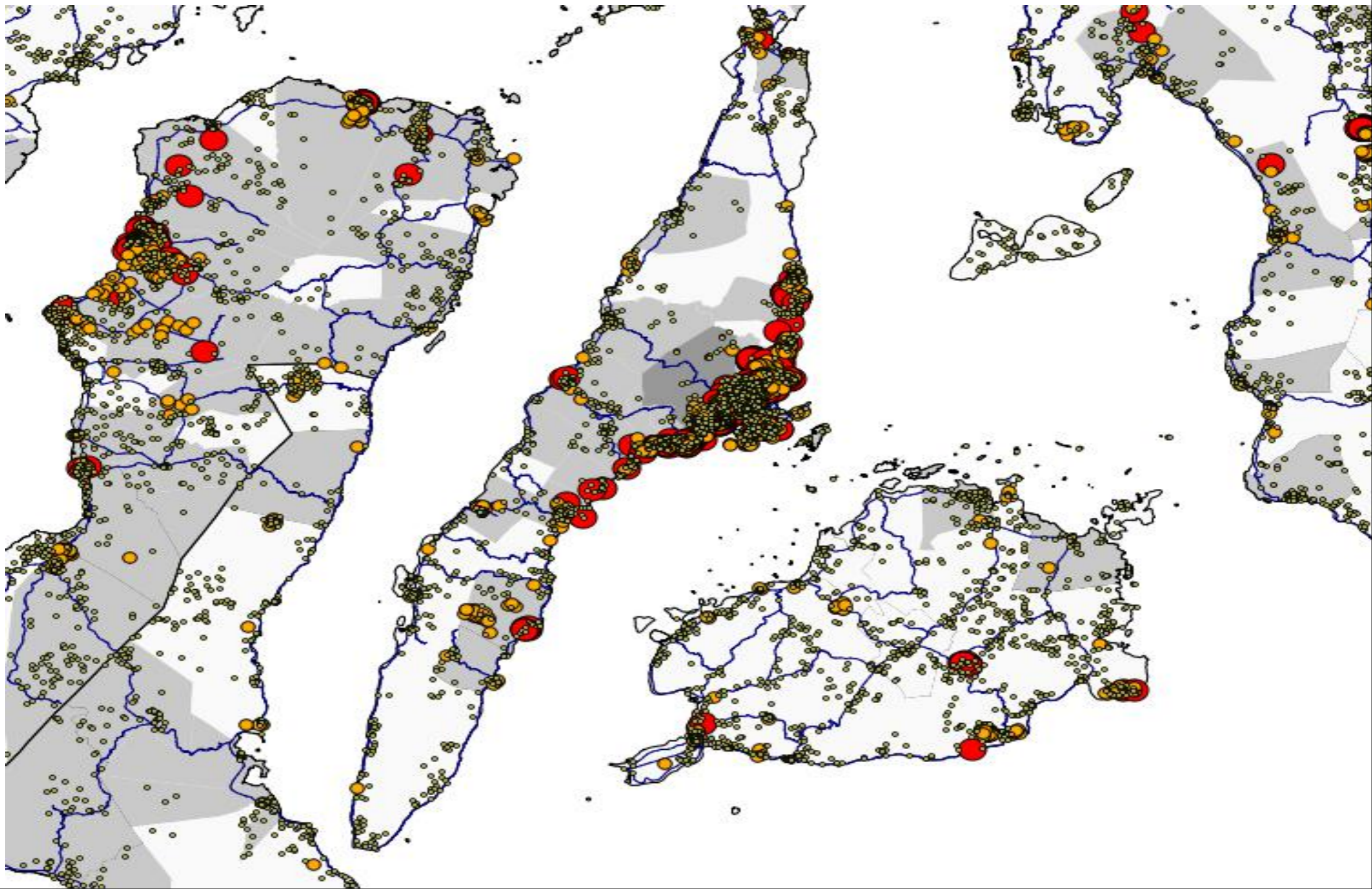
650 High
Trade Towns

650 High Poor
Count Towns

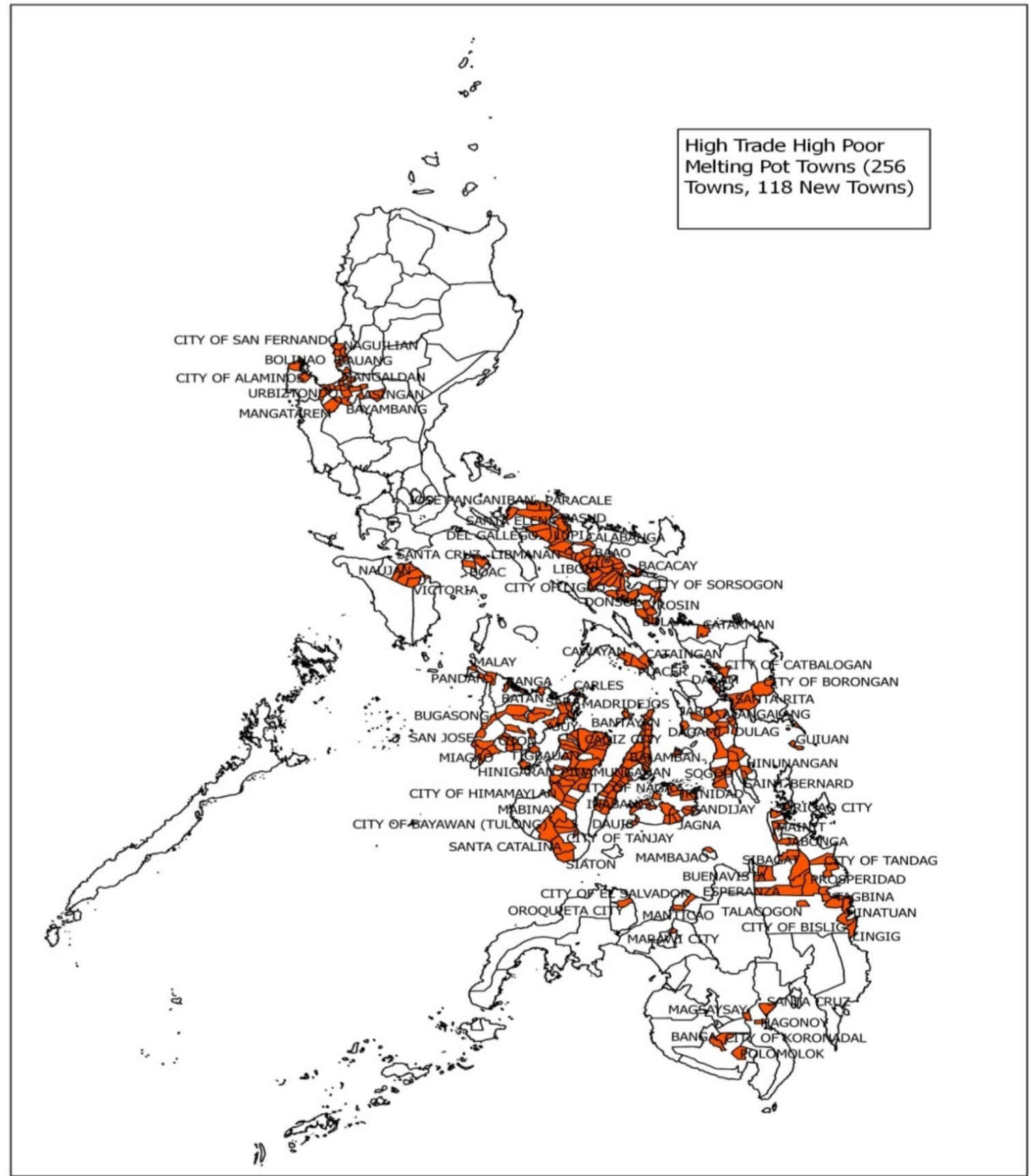
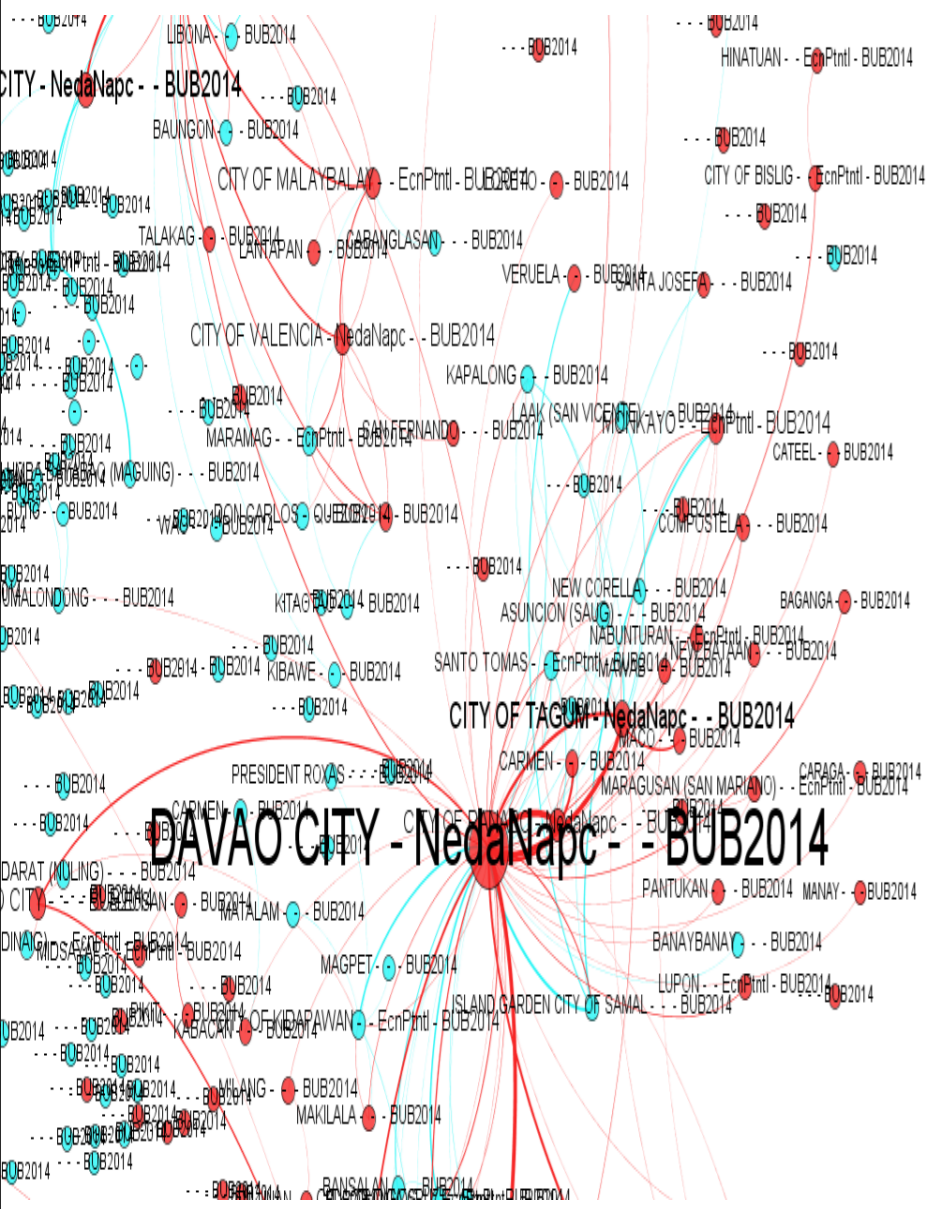


Our interpretation of poor towns with economic potential

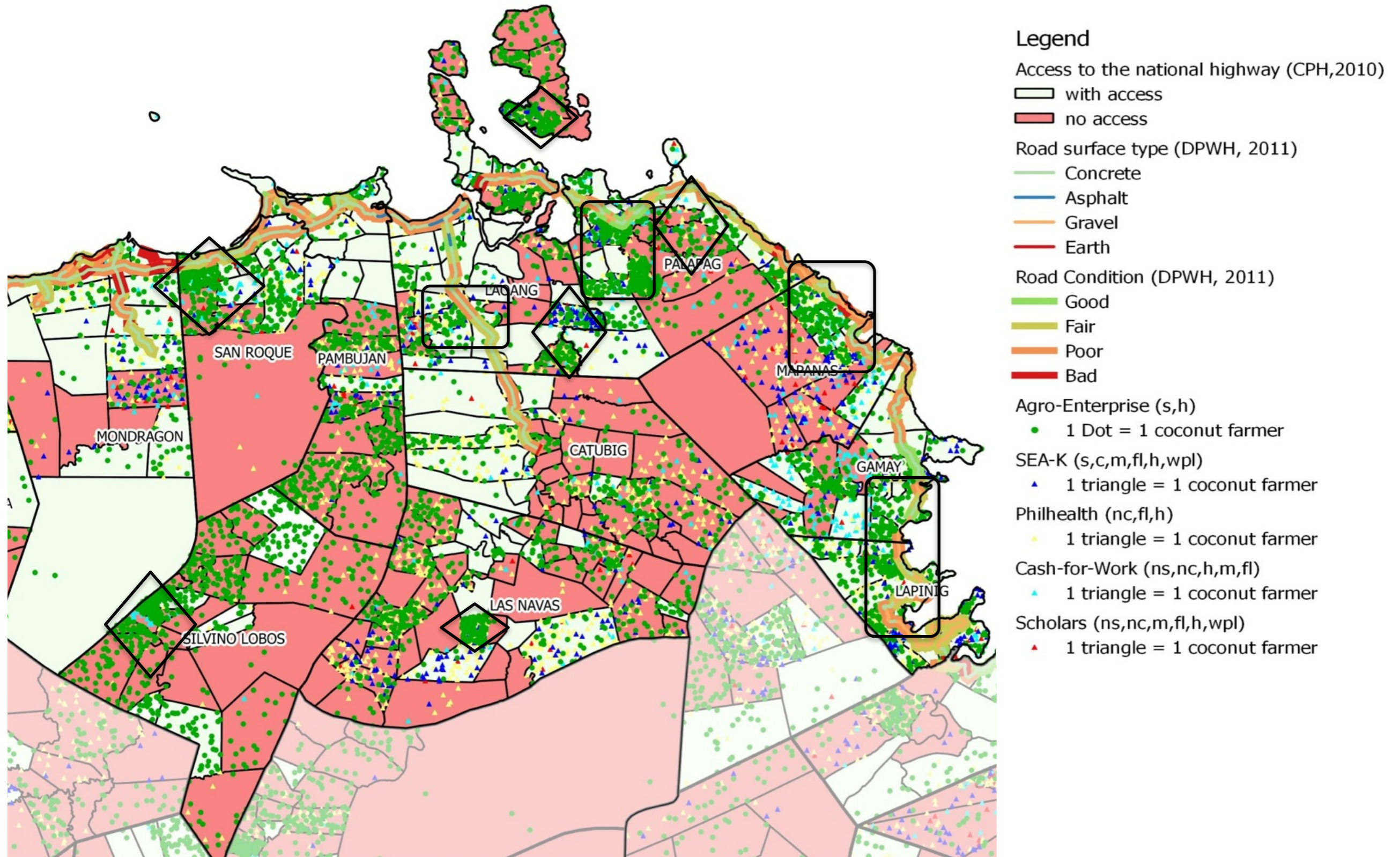
Primary and secondary manufacturing hubs: Visayas (NSO 2010)



Secondary agglomerations may be supported to bridge the immobile poor to value chains

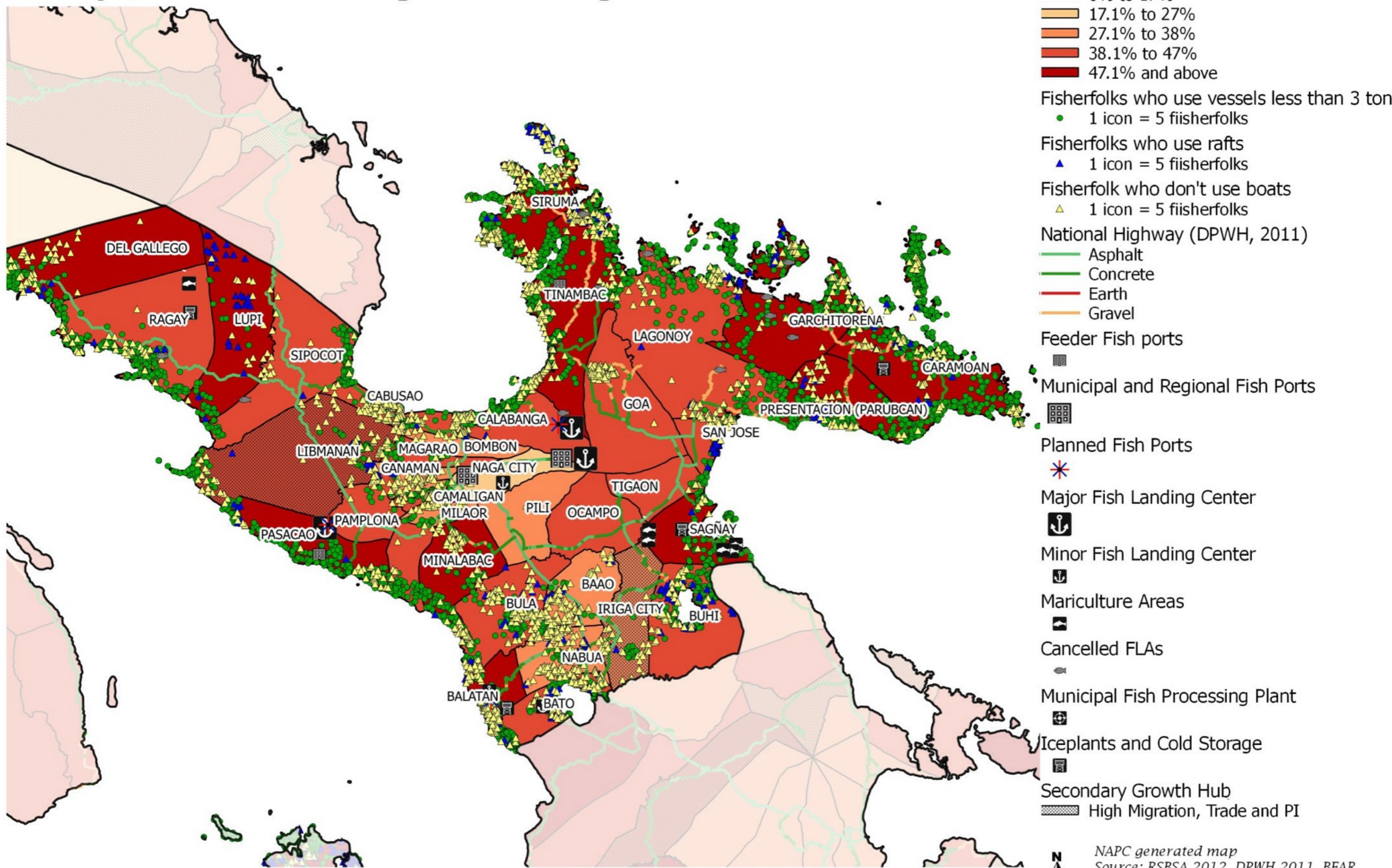


Coconut Roadmap: Context specific interventions



Camarines Sur

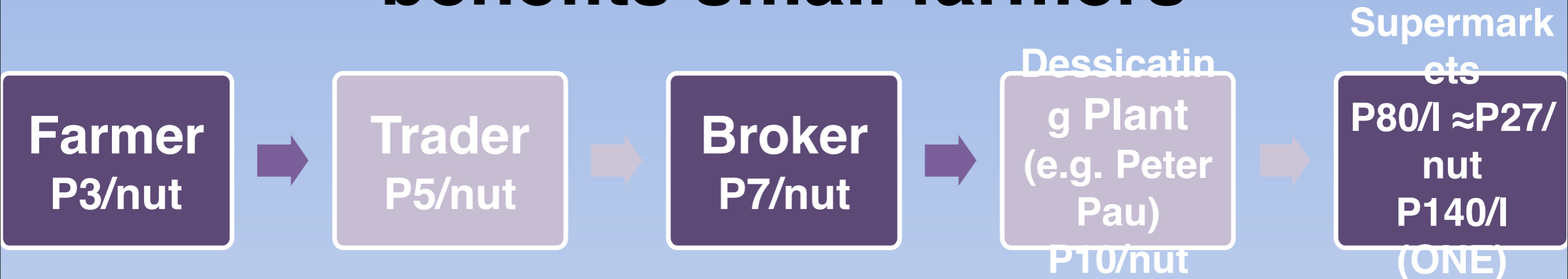
Poverty Incidence and Fishing Vessel Tonnage



- Municipal Poverty Incidence (FIES, 2009)
 - 0% to 17%
 - 17.1% to 27%
 - 27.1% to 38%
 - 38.1% to 47%
 - 47.1% and above
- Fisherfolks who use vessels less than 3 tons
 - 1 icon = 5 fisherfolks
- Fisherfolks who use rafts
 - 1 icon = 5 fisherfolks
- Fisherfolk who don't use boats
 - 1 icon = 5 fisherfolks
- National Highway (DPWH, 2011)
 - Asphalt
 - Concrete
 - Earth
 - Gravel
- Feeder Fish ports
- Municipal and Regional Fish Ports
- Planned Fish Ports
- Major Fish Landing Center
- Minor Fish Landing Center
- Mariculture Areas
- Cancelled FLAs
- Municipal Fish Processing Plant
- Iceplants and Cold Storage
- Secondary Growth Hub
- High Migration, Trade and PI

Connectivity and geography matters. But a rise in the demand for goods that underemployed farmers produce matters just as much.

... But current value chain hardly benefits small farmers

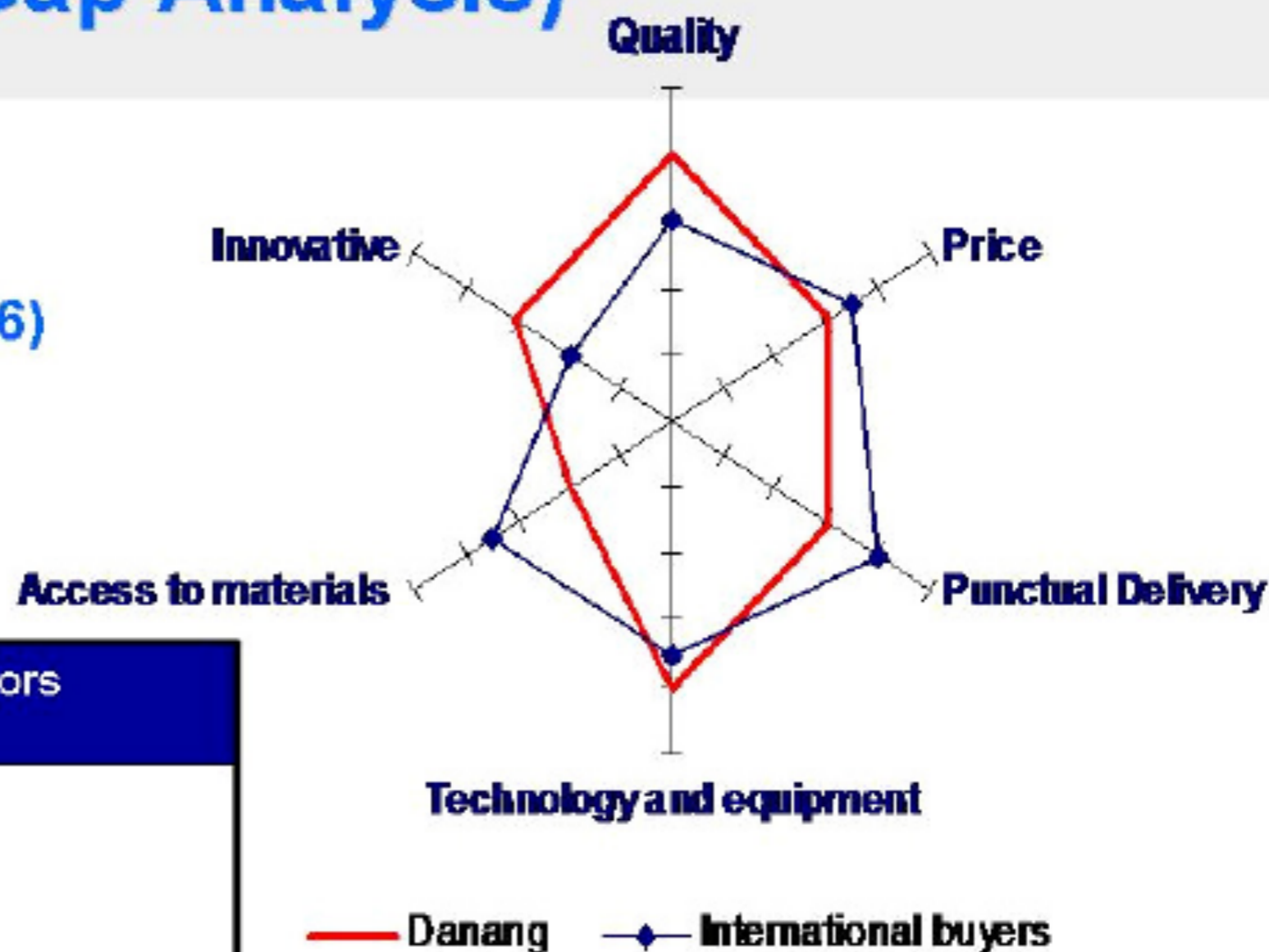


- Farmgate price of mature whole nut is coupled with prevailing copra prices, e.g. if copra sells at P15/kg, a mature whole nut sells at P3.00/nut
- Dessicating plants and global players reap the most from the current value chain; formerly wasted coco water is simply pasteurized and packaged in tetra packs.

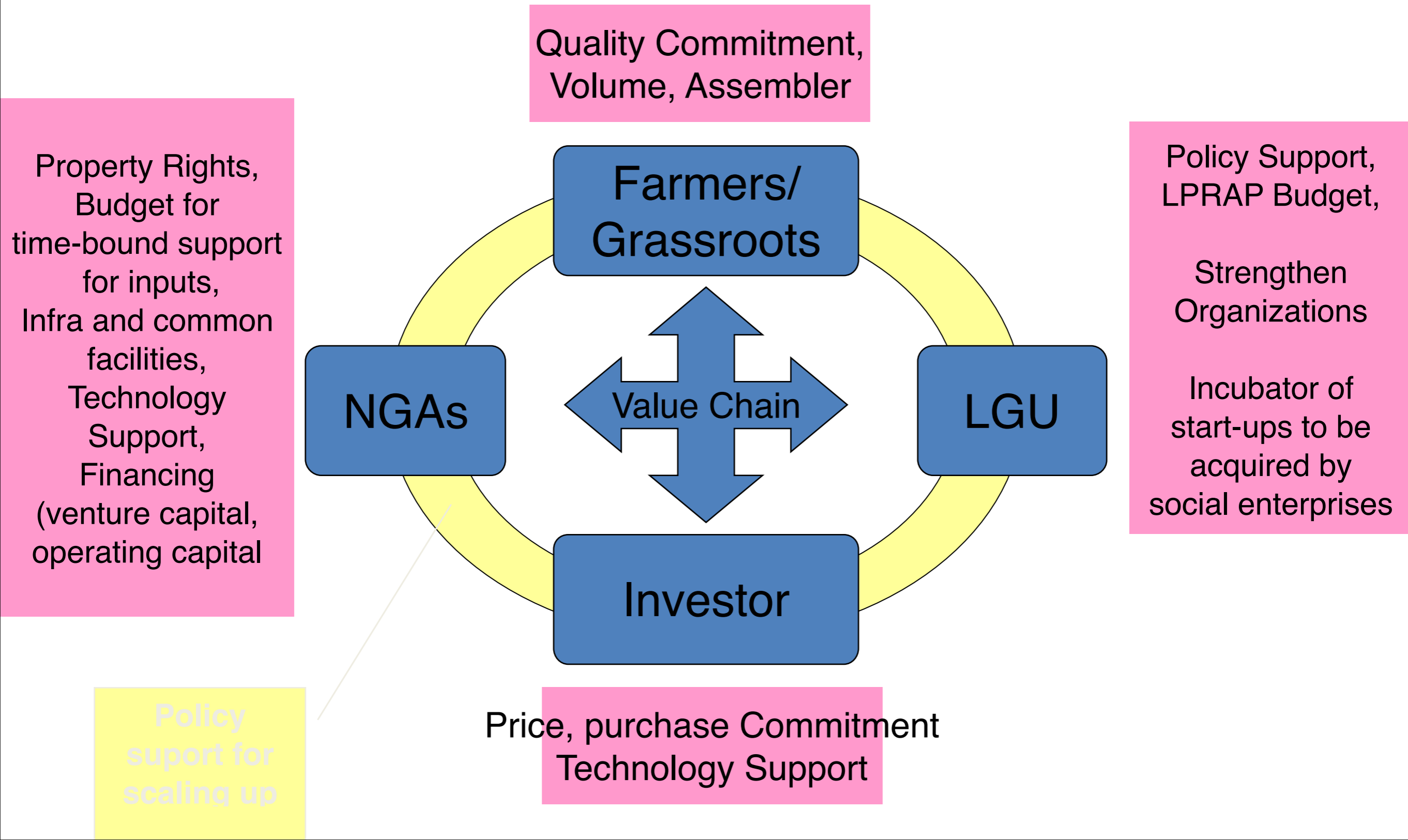
Economic Potential Study: CSF Analysis (Gap Analysis)

Wooden Furniture: Example Da Nang (2006)

Sub-Sector	Critical Success Factors
<u>Wooden Furniture</u>	1.Reputation 2.Price 3.Punctual Delivery 4.Technology & Equipment 5.Access to materials 6.Innovativeness



4-in-1 “Caffeine for inclusive Growth”



SALAMAT PO.